

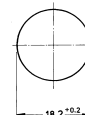


## Other pushbuttons

### Pushbutton, opaque, mounting hole diameter 18.2 mm, 250 V/2 A



Pict.: green



Mounting hole

### Technical data

#### General information

Form of lens	protruding lens
Colour of lens	see order block
Form of collar	round

#### Dimensions

Diameter of collar	22 mm
Overall height	10.5 mm
Mounting depth	34 mm
Mounting hole	18.2 mm

#### Mechanical design

Mounting	ring nut
Terminals	see order block
Contact system	sliding bridge contact
Contact function	momentary
Contact arrangement	see order block
Contact materials	Ag
Illuminability	no
Lamp socket	no

#### Mechanical characteristics

Operating force max.	9.5 N
Operating travel	5 mm
Switching travel NC	2.1 mm
Switching travel NO	3.7 mm
Robustness min.	100 N

#### Electrical characteristics

Rated voltage AC max.	250 V
Rated current max.	2 A
Contact resistance acc. to life max.	200 mΩ

#### Other specifications

Operating life	50000
Degree of protection from front side	IP40 (IP65 with sealing cap)
Ambient temp. operating min.	-25 °C
Ambient temp. operating max.	+85 °C
Storage temperature min.	-40 °C
Storage temperature max.	+90 °C
Resistance to constant environment	according to IEC 600 68-2-3 and 2-30
Resistance at variable environment	according to IEC 600 68-2-14 and 2-33
Weight	14 g
Flame class acc. to UL 94	V 0
Hot wire ignition acc. to IEC 60695-2-1	yes

### Accessories Pushbutton, opaque, mounting hole diameter 18.2 mm, 250 V/2 A

Description	Photo	Order no.	Page
Neoprene sealing cap, black		5.52.008.061/0100	
Neoprene sealing cap, red		<b>5.52.008.061/0300</b>	
Neoprene sealing cap, green		5.52.008.061/0500	
Protective sleeve for terminals		<b>5.52.011.028/0100</b>	

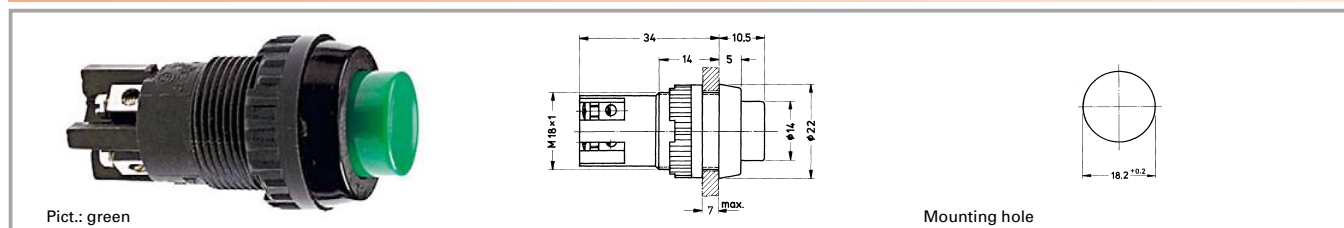


## Other pushbuttons

### Accessories Pushbutton, opaque, mounting hole diameter 18.2 mm, 250 V/2 A

Description	Photo	Order no.	Page
Fixing spanner M 18, M 19		<b>5.58.002.017/0105</b>	5 - 23

### Pushbutton, opaque, mounting hole diameter 18.2 mm, 250 V/2 A



Contact arrangement	Contact function	Illuminability	Terminals	Colour of lens	Order no.
2 NO	momentary	no	screw terminals	opaque black	<b>1.01.102.001/0104</b>
2 NO	momentary	no	screw terminals	opaque red	<b>1.01.102.001/0301</b>
2 NO	momentary	no	screw terminals	opaque green	<b>1.01.102.001/0507</b>
1 NC + 1 NO	momentary	no	screw terminals	opaque black	<b>1.01.102.011/0104</b>
1 NC + 1 NO	momentary	no	screw terminals	opaque white	1.01.102.011/0205
1 NC + 1 NO	momentary	no	screw terminals	opaque red	<b>1.01.102.011/0301</b>
1 NC + 1 NO	momentary	no	screw terminals	opaque green	<b>1.01.102.011/0507</b>

Technical data see page 1 - 82

1

Other Pushb.