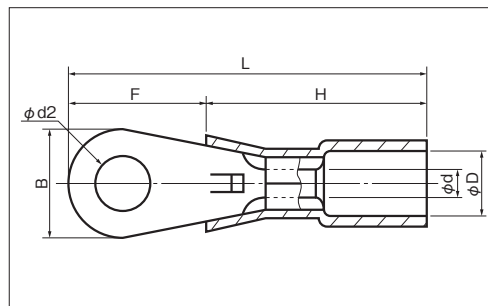
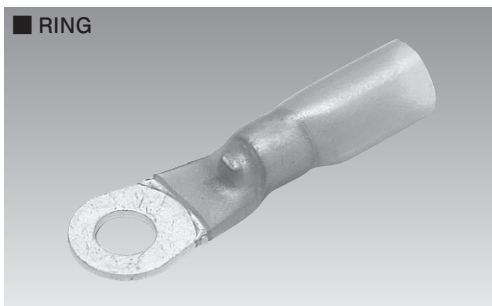




HEAT-SHRINKABLE RINGS & BUTTS

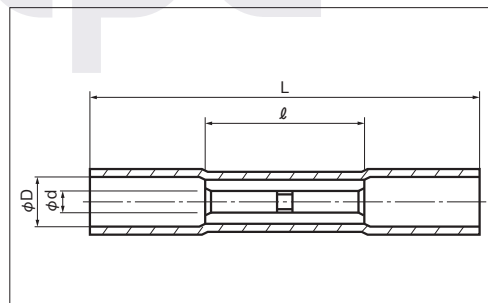
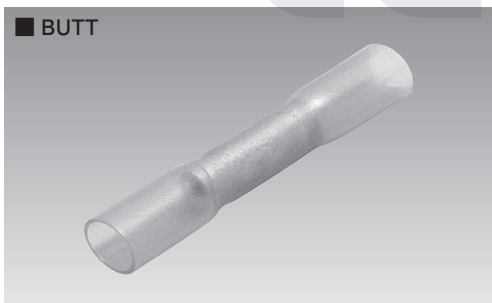


RoHS10

See page 2

PART NUMBER	DIMENSIONS mm						WIRE RANGE		TOOL No.	STD COLOR	STD QTY/BOX	
	$\phi d2$	B	L	F	H	ϕD	ϕd	mm ²				AWG
SR 1.25-3C	3.2	5.5	25.3	7.0	16.5	4.2 (MIN)	1.7	0.75 1.25	18-16	NH 82A	Red Translucent	1000 (100×10)
SR 1.25-3.5C	3.7	6.6	25.8	8.0								
SR 1.25-4C	4.3	8.0	26.5	9.0								
SR 1.25-5C	5.3		26.5	10.0								
SR 2-3C	3.2	5.5	25.8	7.5	17.0	4.9 (MIN)	2.3	2.0	14	NH 82A	Blue Translucent	1000 (100×10)
SR 2-3.5C	3.7	6.6	26.3	8.0								
SR 2-4C	4.3	8.5	27.3	9.0								
SR 2-5C	5.3	9.5	27.8	9.5								
SR 5.5-3C	3.2	7.0	33.5	10.0	21.5	6.4 (MIN)	3.4	5.5	10	NH 82A	Yellow Translucent	1000 (100×10)
SR 5.5-3.5C	3.7											
SR 5.5-4NC	4.3											
SR 5.5-4C												
SR 5.5-5C	5.3											

NOTE 1) Dimension L · F · H shows minimum.



RoHS10

See page 2

PART NUMBER	DIMENSIONS mm				WIRE RANGE		TOOL No.		STD COLOR	STD QTY/BOX
	ϕd	ϕD	L	ℓ	mm ²	AWG	Hand	Pneumatic		
SB 2218	1.4	2.9 (MIN)	25	11.5	0.3 0.5	22-20	NH 82A	NA 3 (N3 15)	Yellow Translucent	1000 (100×10)
SB 1816	1.8	4.2 (MIN)	37	15.0	0.75 1.25	18-16	NH 82A	NA 3 (N3 16)	Red Translucent	1000 (100×10)
SB 1614	2.3	4.9 (MIN)	37	15.0	2.0	14	NH 82A	NA 3 (N3 16)	Blue Translucent	1000 (100×10)
SB 1210	3.5	6.2 (MIN)	42	15.0	5.5	10	NH 82A	—	Yellow Translucent	500 (100×5)