

NEW



## + INFORMATION

- + Compact heavy duty printer for high demand production for wire, cable and component marking.
- + Feeds, prints and cuts bulk Partex profiles.
- + MK10 is a very cost effective identification system for use in panel building and electrical installations.
- + USB connection, controlled by Partex software.
- + Quick and simple handling thanks to the touch screen.
- + The built-in Wi-Fi module allows for wireless data transmission.

## + PROPERTIES

**Temperature range**

Operating temperature: 0°C - 40°C

Storage temperature: 0°C - 60°C

To obtain the best printing result, the temperature of the profile shouldn't be lower then: 20 - 25°C

**Thermal transfer printing**

300 dpi print resolution

**Printing speed**

300mm/sec

**Width of printing head**

105,7 mm

**PC connection**

USB and Partex software

**Operating System**

Windows: 2000, 2003, XP, Vista, Windows 7, Windows 10

**Memory**

256 MB RAM, 50 MB IFFS

**Power**

110~240 V AC, (50~60 Hz), FCC class A, CB, CCC, cUL

Certified with CE mark

**Dimensions**

(W x D x H): 252 x 288 x 460 mm

**Weight**

10 kg

## + KIT CONTENTS

- + Printer MK10-SQUIX
- + Cutter (optional)
- + Power cord
- + Starting ribbon black 360m
- + USB cable
- + Software
- + Wi-Fi module 



### + SPECIFICATION

- + MK10-SQUIX is a modern thermal transfer printer with a high production speed (up to 300mm/sec).
- + MK10-SQUIX can be connected to your computer with a USB cable or WI-Fi module and controlled by Partex software.
- + The profiles are introduced to the printer from outside or unrolled from rolls and discs placed inside the device, then they are printed and perforated to the specified length selected by the user.
- + Numerous features, the touch screen, and broad printer head with 300 dpi resolution make that this is an excellent device for industrial applications.

### + PROFILES TO PRINT

- + PO and POZ profiles with diameters of 1.3 - 8.0mm (POZ is the halogen-free version).
- + PHZF - Flat, halogen-free, heat shrinkable tubes with diameters 2.4 - 38.0mm before shrinking.
- + PP+ profile - Height of 4.6 and 9.0mm compatible with profiles: PT+/PTC/PTZ and PM, PTM, PS.
- + PP+ profile - Height of 6.3, 10.0 and 11.0mm compatible with Wago connectors (TopJobs), Phoenix Contact, Etrelec.
- + PPA+ - Self-adhesive profile.
- + PO-068 profile - Used for marking cables with PKH and POH holders.
- + Labels.
- + Prosleeve:
  - The series of specialised markers with increased resistance
  - ladder format printable heat-shrink tubing SG,MS,HF,NF,EF,ET
  - cable markers CMZ,CMM,CMD,CML,CMT
  - panel label EPL,EPF.

### + ACCESSORIES



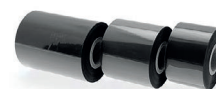
**MK-STV**  
Reel stand



**MK-RS3**  
Small reel stand



**MK10-CU**  
Cutting unit



**RIBBONS**



# MK10-DH - THERMAL TRANSFER PRINTER WITH DUAL PRINTING HEAD



\* pictured with optional cutting unit

## + INFORMATION

- + Prints on both sides of the profile. (Dual printing heads)
- + Compact heavy duty printer for high demand production of wire, cable and component markings.
- + Feeds, prints and cuts bulk Partex profiles.
- + USB connection, controlled by Partex WinSign software.

## + PROPERTIES

### Temperature range

Operating temperature: +10°C to +35°C

To obtain the best printing result, the temperature of the profile shouldn't be lower then: +25 °C

### Working conditions:

Humidity: 30 - 85 %

### Thermal transfer printing

300 dpi print resolution

### Width of printing head

105 mm

### PC connection

USB and Partex software WinSign

### Power supply

100 ~ 240V (50-60Hz)

Power consumption: Max 300 W

CE-certified

### Dimensions

(L x W x H): 554 x 248 x 395 mm

### Weight

21 kg

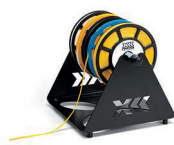
## + KIT CONTENTS

- + MK10-DH,
- + power cord,
- + Starting ribbon black 360 m,
- + USB cable
- + WinSign software.

## + ACCESSORIES



**MK-STV**  
Reel stand



**MK-RS3**  
Small reel stand



**MK10-CU**  
Cutting



**RIBBONS**  
PAGE 81



+ SPECIFICATION

- + MK10-DH is a modern thermal transfer printer with a high production speed (up to 125mm/sec).
- + MK10-DH can be connected directly to a computer with a USB cable and is controlled by Partex Winsign software. It prints onto both sides of the profile, direct from the reel, and can cut the markers to the required length.



## MARKERS PRINTED BY MK10

### + PO-PROFILE

TYPE	HALOGEN FREE VERSION	DIAMETER [mm] [min/max]	CROSS SECTIONAL [mm <sup>2</sup> ]	PACKAGING
PO-01	POZ01	13/18	0.25	6 m / 250 m
PO-02	POZ02	17/22	0.5	5 m / 60 m / 250 m
PO-03	POZ03	2.0/2.5	0.75	4.5 m / 50 m / 250 m
PO-04	POZ04	2.2/2.8	1.0	4.5 m / 50 m / 200 m
PO-05	POZ05	2.7/3.5	1.5	4 m / 40 m / 200 m
PO-06	POZ06	3.2/4.0	2.5	3.5 m / 40 m / 200 m
PO-06Q**	-	-	-	3.5 m / 40 m
PO-068Q**	PKZ20Q	-	-	25 m / 50 m
PO-068TW	PKZ20	6.8/7.0	-	4.5 m / 50 m
PO-07	POZ07	3.8/4.7	4.0	3.5 m / 30 m / 100 m
PO-08	POZ08	4.6/5.5	6.0	3 m / 30 m / 100 m
PO-09	POZ09	5.6/7.0	10.0	50 m
PO-10	POZ10	6.5/8.0	16.0	50 m



**PO/POZ**

▶ PAGE 28



**PO-068**

▶ PAGE 28

STANDARD COLOUR: yellow, white. Others on request. \* Mounting with marker holder POH or PKH \*\* Mounting with cable tie

### + FLAT HEATSHRINKABLE TUBES PHZF

TYPE	DESCRIPTION	PACKAGING
PHZF20024	flat heat shrink 2.4 / 1.2 mm	100 m / 25 m
PHZF20032	flat heat shrink 3.2 / 1.6 mm	100 m / 25 m
PHZF20048	flat heat shrink 4.8 / 2.4 mm	100 m / 25 m
PHZF20064	flat heat shrink 6.4 / 3.2 mm	100 m / 25 m
PHZF20095	flat heat shrink 9.5 / 4.8 mm	75 m
PHZF20127	flat heat shrink 12.7 / 6.4 mm	50 m
PHZF20190	flat heat shrink 19.0 / 9.5 mm	50 m
PHZF20254	flat heat shrink 25.4 / 12.7 mm	50 m
PHZF20380	flat heat shrink 38.0 / 19.1 mm	50 m



**PHZF**

▶ PAGE 34

STANDARD COLOUR: yellow, white. Others on request.





+ PP+ PROFILE

TYPE	HEIGHT [mm]	FIT FOR	PACKAGING
PP+046	4.6	PT+, PTC, PTZ, PM-10	50 m / 17 m
PP+10	10.2	terminals Phoenix Contact *	50 m / 17 m
PP+063	6.3	PM-20, PS	50 m / 17 m
PP+09	9.0	terminals ABB Entelec	50 m / 17 m
PP+110	11.0	terminals Wago (TopJobs)	50 m / 17 m
PPA+09	9.0	components	20 m / 10 m

PP+046

PP+  
▶ PAGE 84

STANDARD COLOUR: yellow, white \* UT2.5, UTTB2.5, ST4, DT2.5, QTC, DTI2.5



PT+  
▶ PAGE 48



PTC  
▶ PAGE 50



PM  
▶ PAGE 52



PTM  
▶ PAGE 54



PS  
▶ PAGE 82

+ PPQ+

TYPE	HEIGHT [mm]	LENGTH [mm]	PACKAGING
PPQ+10040	10	40	500 pcs
PPQ+10060	10	60	333 pcs
PPQ+10080	10	80	250 pcs
PPQ+19040	19	40	500 pcs
PPQ+19060	19	60	333 pcs
PPQ+19080	19	80	250 pcs
PPQ+38060	38	60	333 pcs
PPQ+38080	38	80	250 pcs
PPQ+38100	38	100	200 pcs



PPQ+  
▶ PAGE 56

STANDARD COLOUR: yellow, white MOUNTED with cable tie.

